

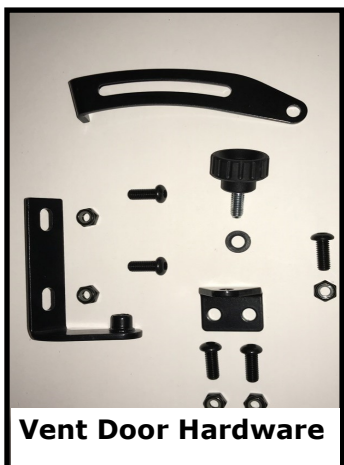
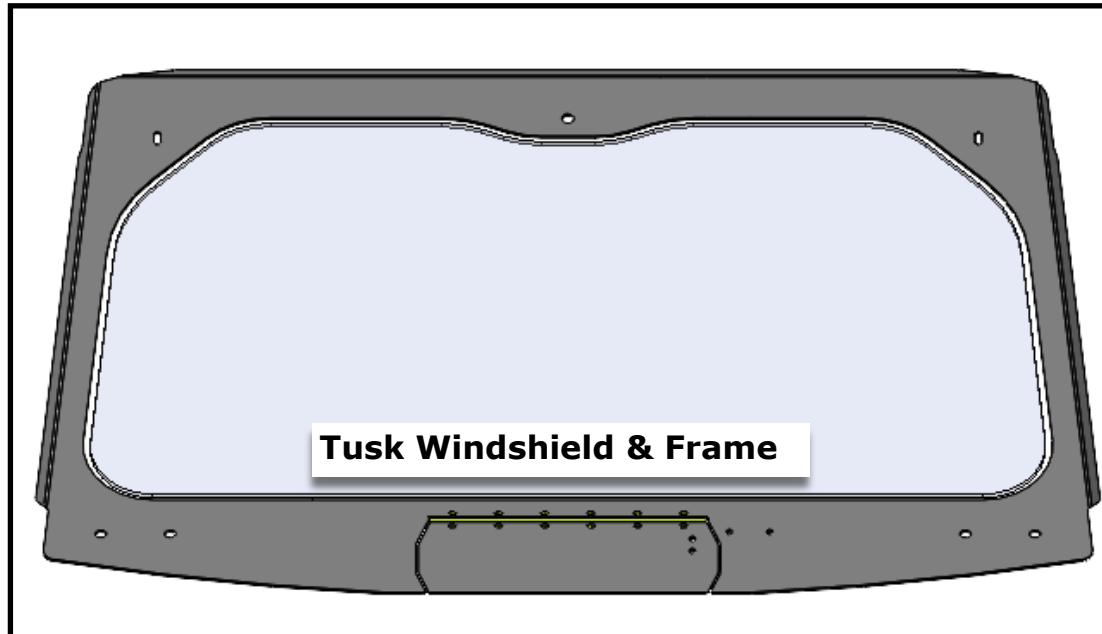
Full Glass Windshield Kawasaki KRX 1000
Part #1824330023



Congratulations on your purchase of a Tusk Full Glass Windshield made from the highest quality scratch resistant automotive glass available today. Please note the information and instructions below to get the most out of your Tusk Product.

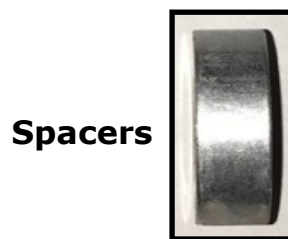
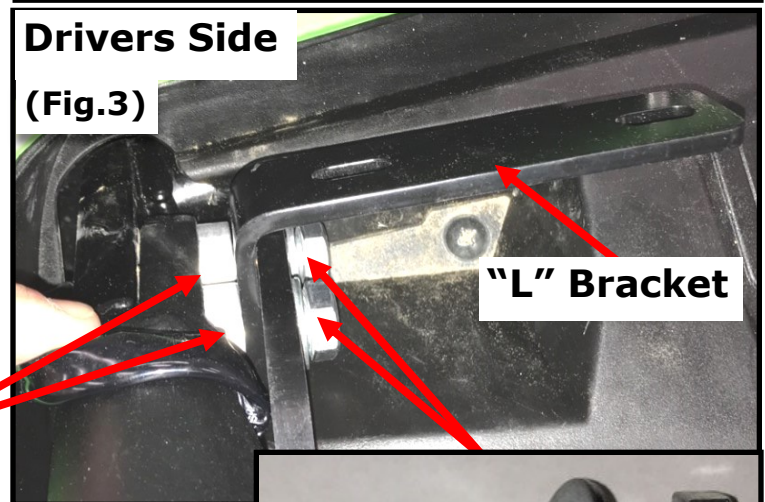
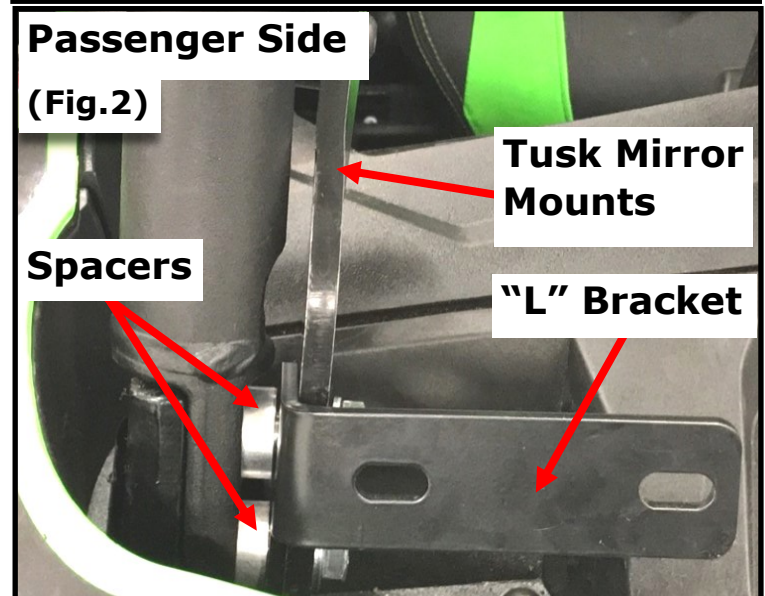
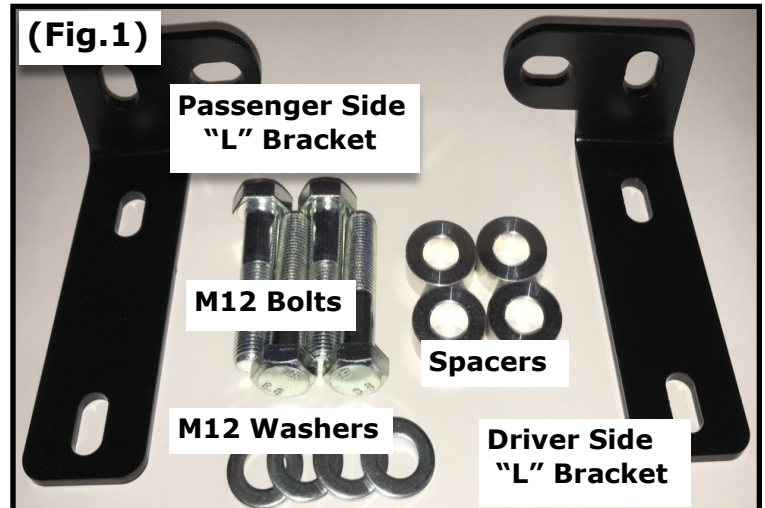
INSTALLATION INSTRUCTIONS AND INFORMATION

Vehicle Fitment:	2020+ KRX 1000	2023+ KRX 4 1000
Package Contents:		
Windshield Frame	(1)	M6 Hand Knob (1)
Vent Bracket A	(1)	M6 x 16mm Button Head (5)
Vent Bracket B	(1)	M6 Nyloc Nut (7)
Vent Bracket C	(1)	M6 Friction Washer (1)
M8 x 20mm Button Head Bolt	(4)	M6 Washer (2)
M8 Nyloc Nut	(4)	M6 x 20mm Button Head Bolt (2)
A-Pillar Mounts (LH & RH)	(1)	11.75" Bulb Seal (1)
A-Pillar Washer	(4)	16.5" Bulb Seal (2)
A-Pillar Bolt	(4)	36" Foam Tape (2)
A-Pillar Spacer	(4)	23.5" Foam Tape (2)
16" Wiper	(1)	



For illustration purposes we will install the windshield in combination with the Tusk Pivot Folding Mirrors with A-Pillar Mounts part number 1941310008 for the Kawasaki KRX 1000. We will use the **bolts provided in the windshield kit**. If you do not have the Tusk Pivot Folding Mirrors, the installation will follow the same installation process using the same provided hardware in the windshield.

1. Remove and discard the OEM A-pillar bolts. Locate the following hardware; A-Pillar "L" Brackets, M12 A-Pillar bolts with M12 A-Pillar washers and A-Pillar spacers (**Fig.1**).
2. Install the provided A-pillar bolts followed by the Tusk mirror A-Pillar mounts. With the slotted holes facing forward, sandwich the A-Pillar "L" bracket between the spacers and the mirror mounts passenger side shown in (**Fig.2**). Drivers side shown in (**Fig.3**).
3. Install the M12 washers on the bolt and loosely thread the provided M12 bolts into the machines original A-Pillars. Leave hardware loose for now. Repeat these steps on opposite side (**Fig.3**).

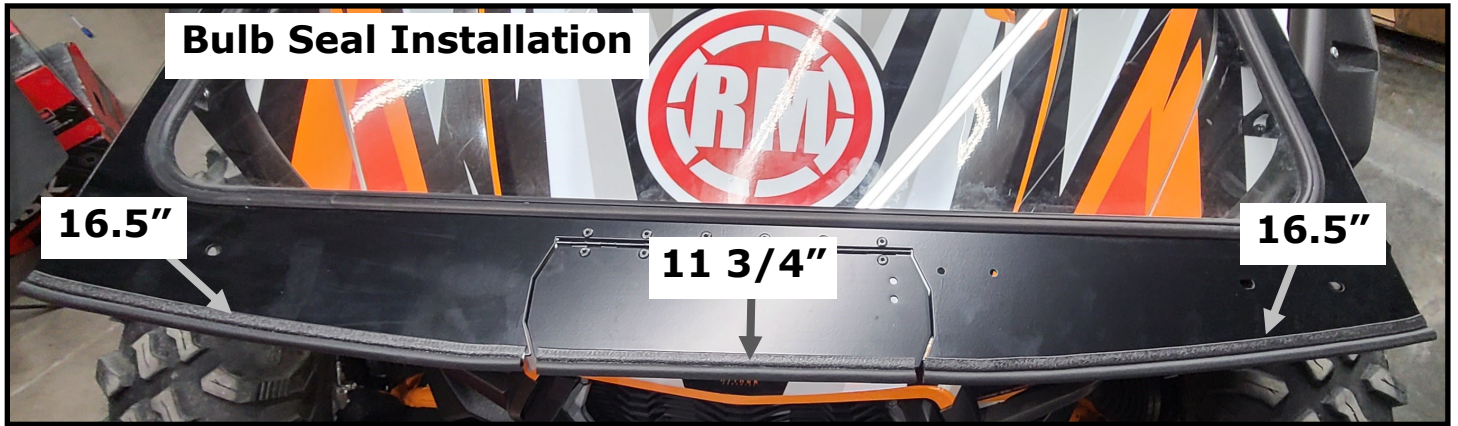


Full Glass Windshield Kawasaki KRX 1000



Prepare The Windshield For Installation

4. Lay the windshield face down on a flat clean work table or work station. Locate the provided pre-cut bulb seal trim. Install bulb seal trim to the bottom edges of the windshield as shown in **(Fig.4)**.

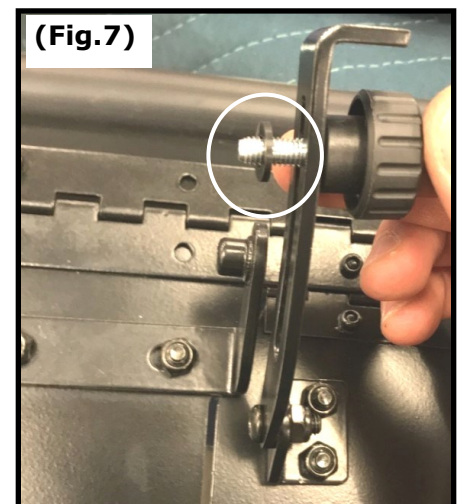
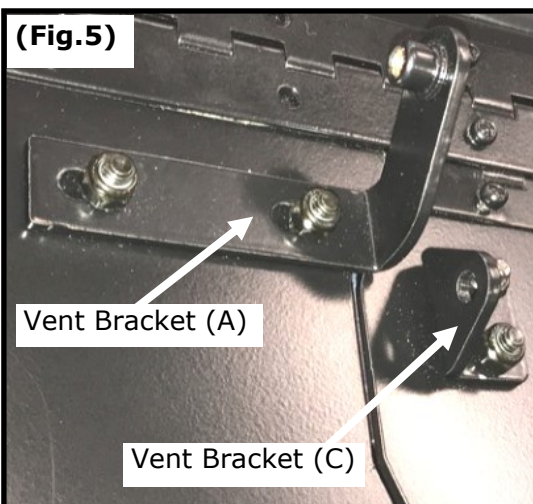
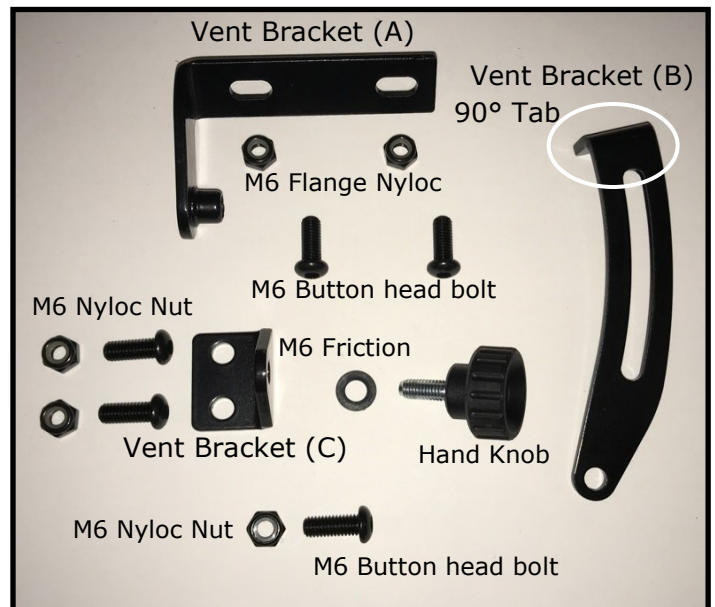


Vent Door Installation

Vent Door Hardware:

Hand Knob	(1)
M6x16mm Allen bolt	(5)
M6 Flange Nyloc	(5)
M6 Friction Washer Black	(1)
Vent Bracket A	(1)
Vent Bracket B	(1)
Vent Bracket C	(1)

5. Locate vent bracket (A), and vent bracket (C). Install these brackets to the windshield using hardware (4) M6 button head bolts, (4) M6 Nyloc nuts refer to **(Fig.5)**.
6. Install Vent bracket (B) to vent bracket (C) using the supplied M6 nyloc nut, and M6x16mm allen bolt as shown in **(Fig.6)**.
Do not overtighten this bolt and nyloc nut.
7. Locate the supplied M6 Hand knob, and M6 Friction washer. Pass the knob through Vent bracket (B). Next, install the M6 friction washer and finish threading the hand knob into vent bracket (A) refer to **(Fig.7)**. When the assembly is complete, the 90° pull tab should face towards the hand knob **(Fig.7)**.



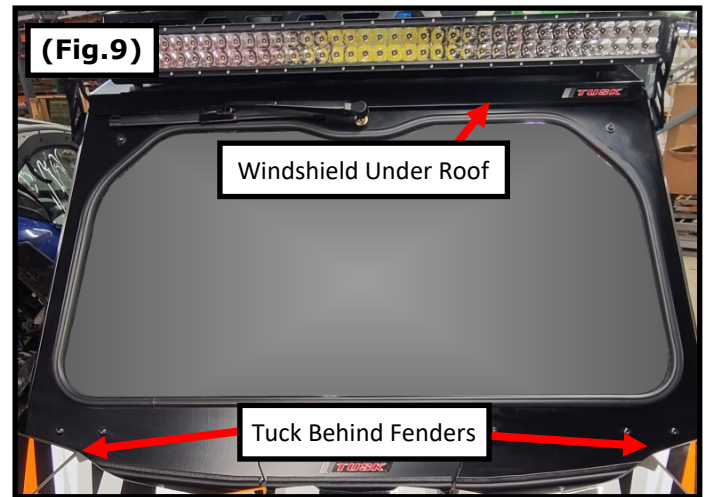
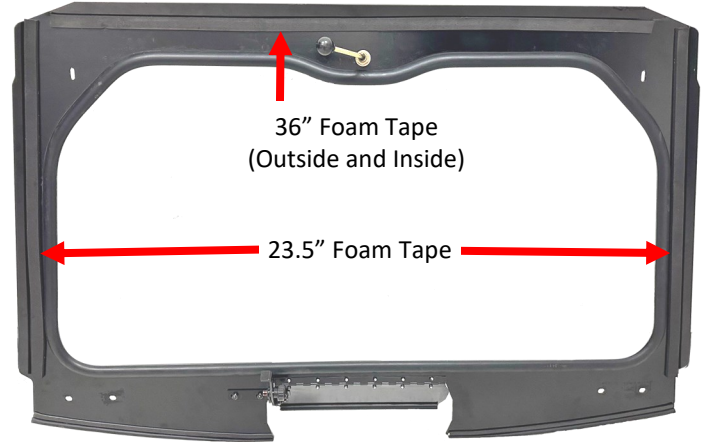
Full Glass Windshield Kawasaki KRX 1000



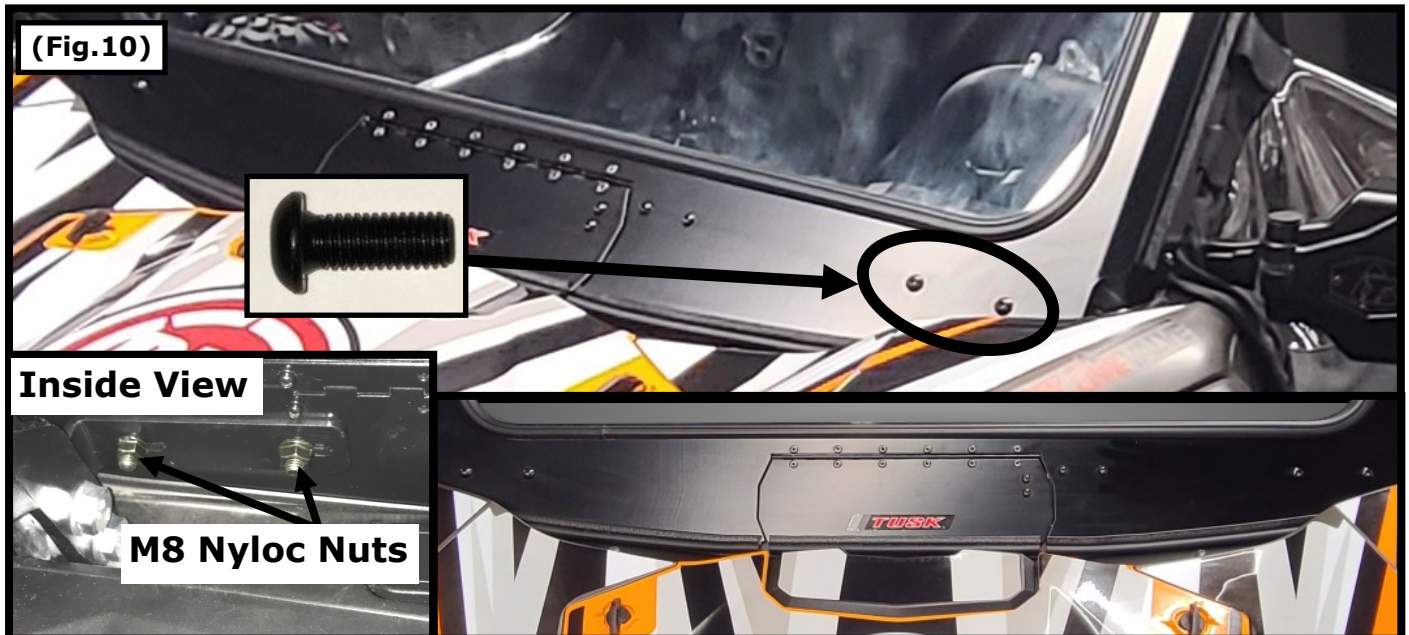
Install The Windshield On The Machine

8. Locate the supplied foam tape roll and the windshield. Place the windshield on your work table or work station. Use the 36" foam tape to fit across the outside upper edge and the inside upper edge of the windshield frame. These two strips of foam tape will prevent rattling between the roof, windshield, and roll cage. Trim as needed. **(Fig. 8)** Careful not to cover any mounting locations of the filler panel with the foam tape.
9. Install the 23.5" foam tape strips on each inside edge of the windshield. These should contact the roll cage when installed to prevent rattling. **(Fig. 8)**
10. Be very cautious on these next steps not to break the glass window. It is smart to use a helper to complete this install.
11. Set the window in place on the machine with the bulb seal side facing the machine. Feed the window from the top down so that it tucks in behind the fenders. **(Fig.9)**
12. Loosen the front roof bolts. Lift the roof up a few inches so that the top of the windshield can be set on the roll cage, under the roof. **(Fig.9)**
13. Align the bottom section of the windshield with the previously installed A-Pillar "L" brackets. With the brackets loosely installed adjust the brackets up or down, adjust the windshield side to side to align the mounting holes if needed. Install provided hardware as shown in **(Fig.10)**. Repeat on opposite side.
14. Once you have the lower hardware loosely installed, center the windshield left or right in relation to the machine. When the windshield is centered tighten all lower windshield mounting hardware including the A-pillar bolts.

(Fig.8)



(Fig.10)



Full Glass Windshield Kawasaki KRX 1000



15. Mount the windshield to the machine. Locate (2) supplied M6x20mm Button head bolts, (2) M6 Flat washers, and (2) M6 Nyloc nuts. Bolt windshield using existing hole locations on the upper A-Pillar gussets of the machine as shown. (Fig.11)



16. **Wiper Installation:** Install the wiper hardware through the glass with the supplied hardware. (Fig.12). Do not overtighten

17. Enjoy the use of your new Tusk Full Glass Windshield!

